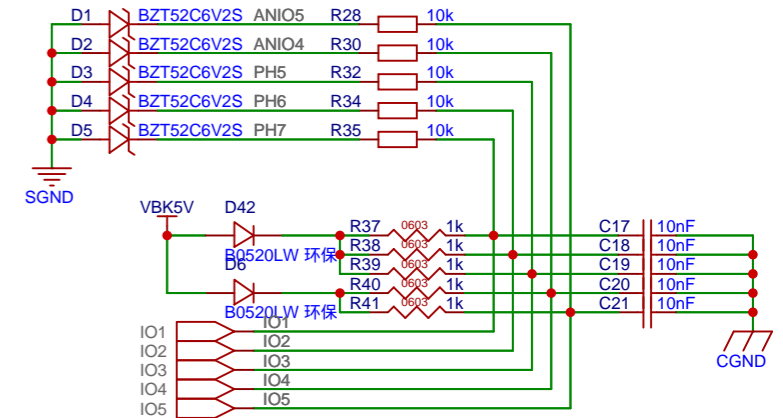
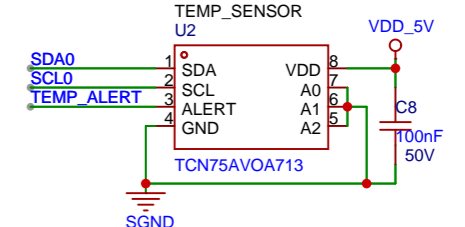
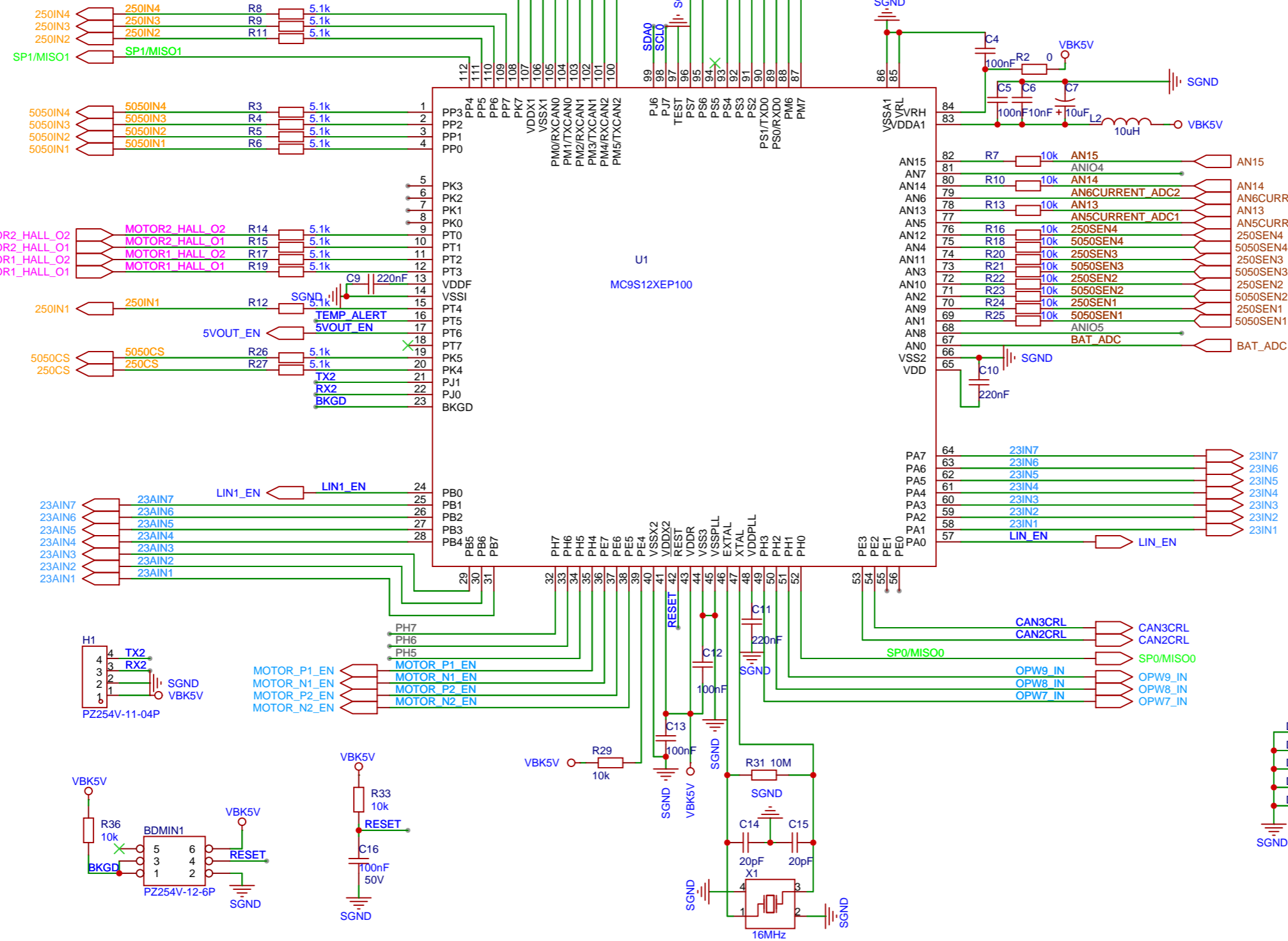
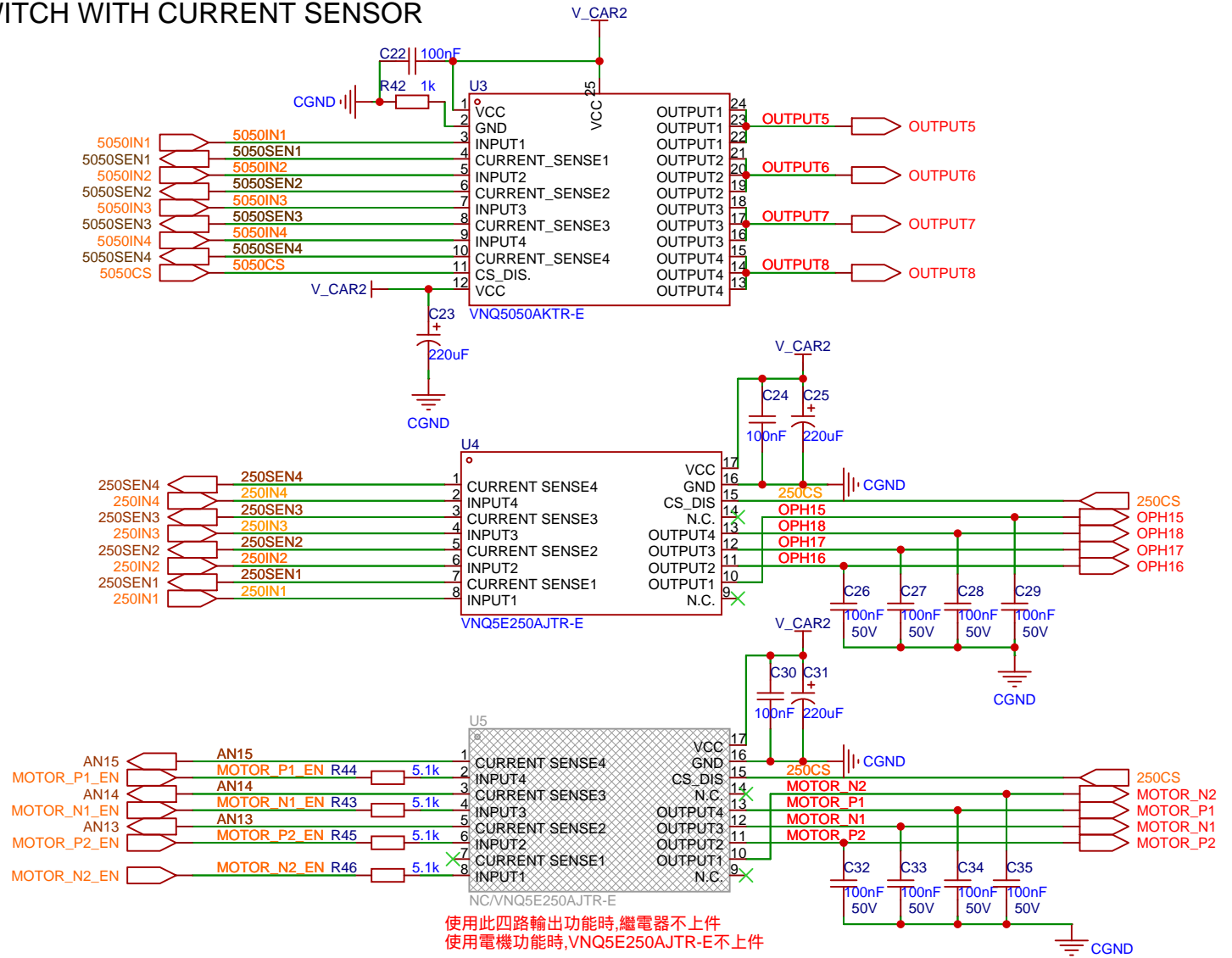


- 12V OUTPUT SW
- HALL INPUT
- Darlington
- IO INPUT
- LED STRIP DI
- CURRENT/VOLTAGE ADC



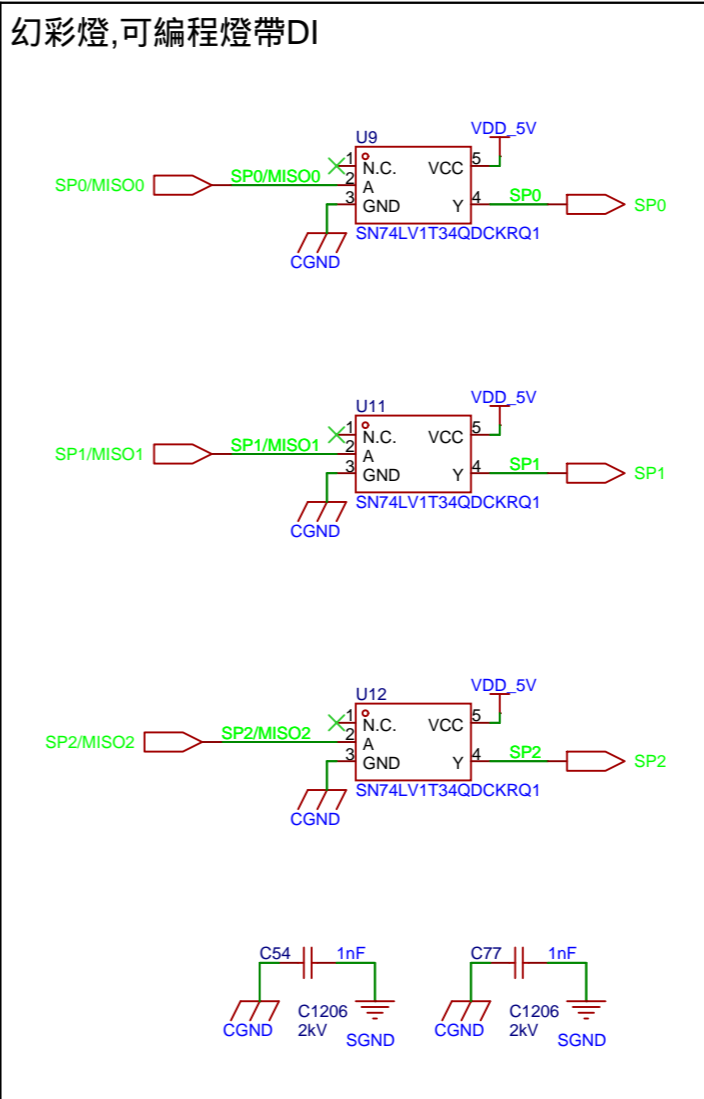
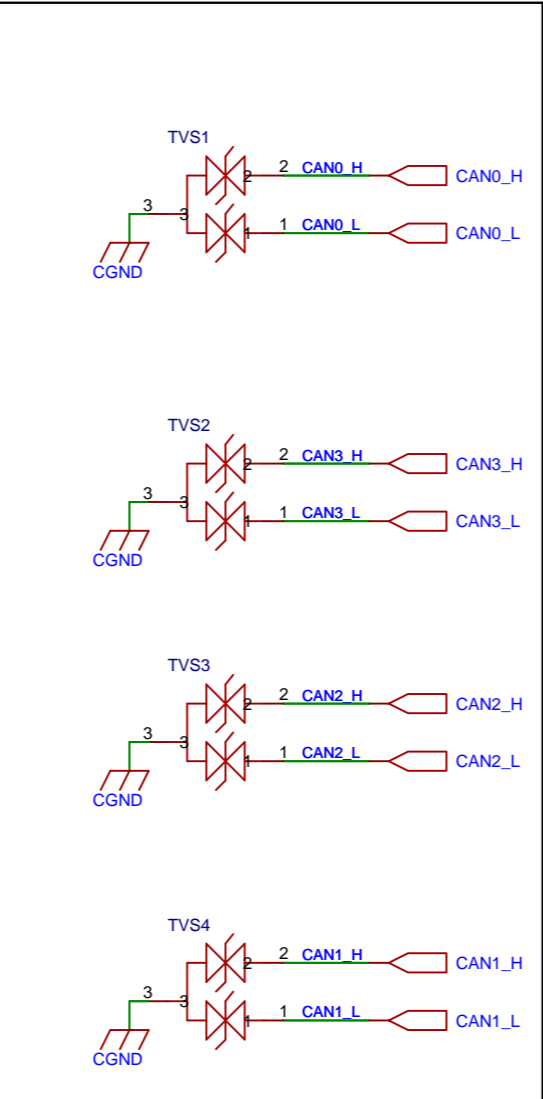
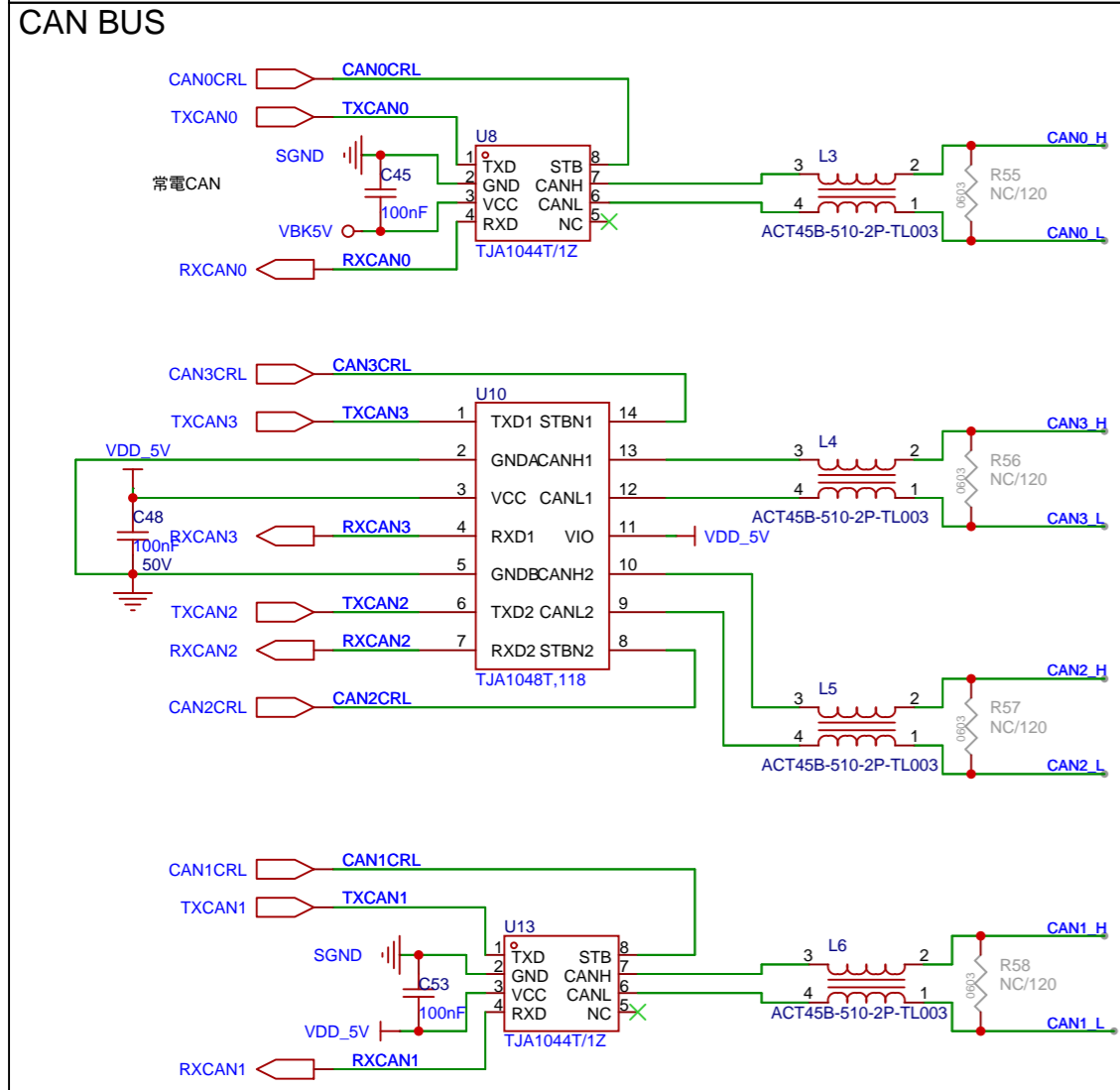
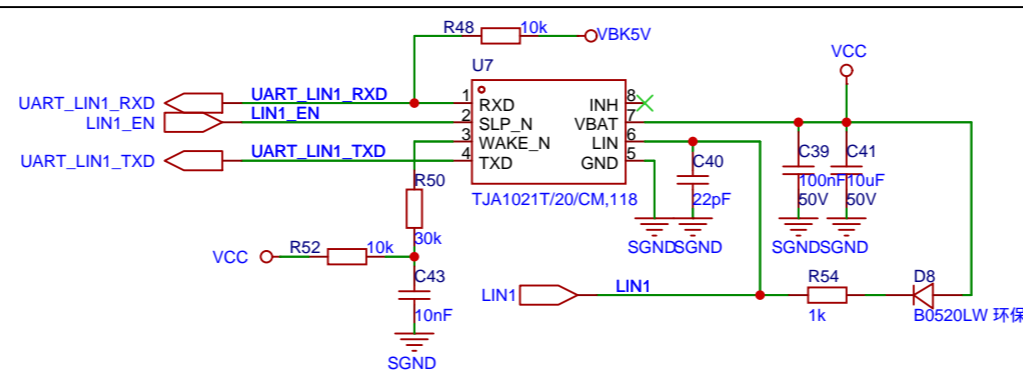
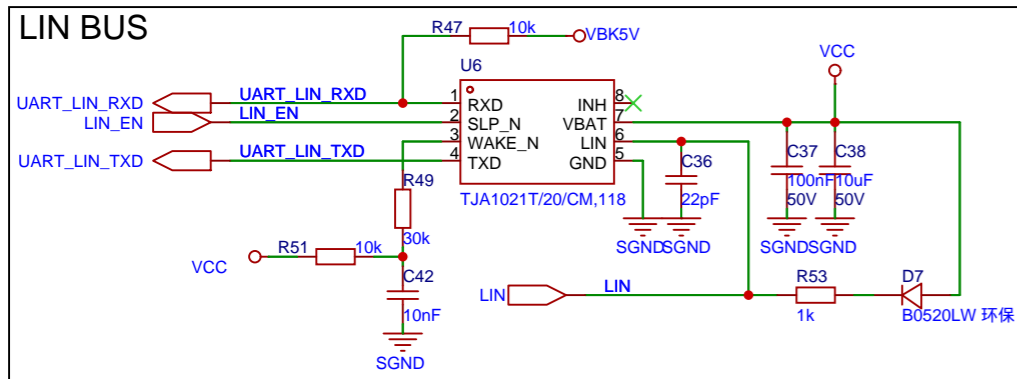
Title		
Size	Number	Revision
D		
Date:	Sheet	Of
File:	Drawn By:	

12V OUTPUT MOS SWITCH WITH CURRENT SENSOR

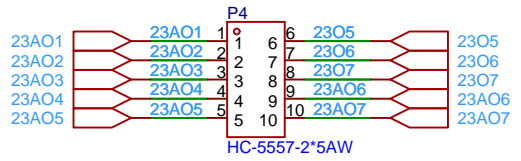
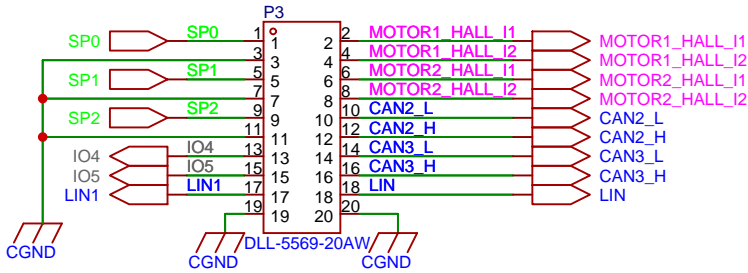
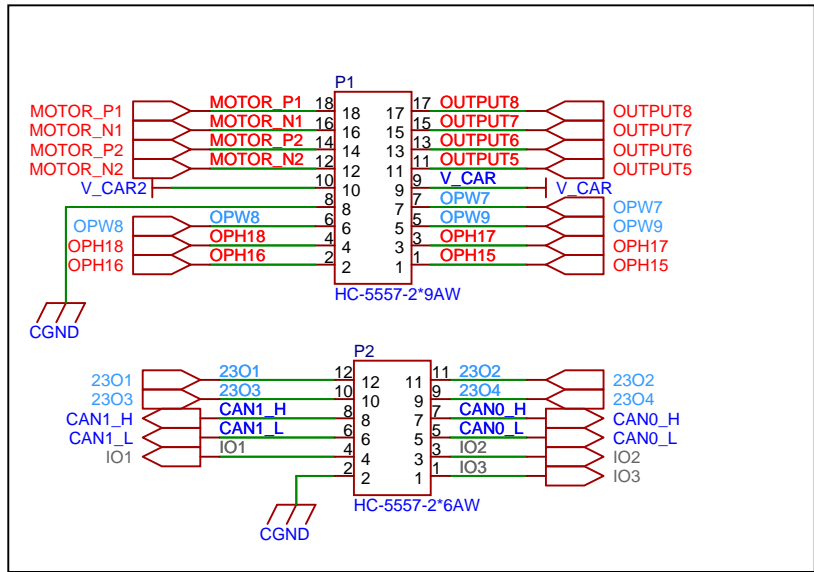


使用此四路输出功能時,繼電器不上件
 使用電機功能時,VNQ5E250AJTR-E不上件

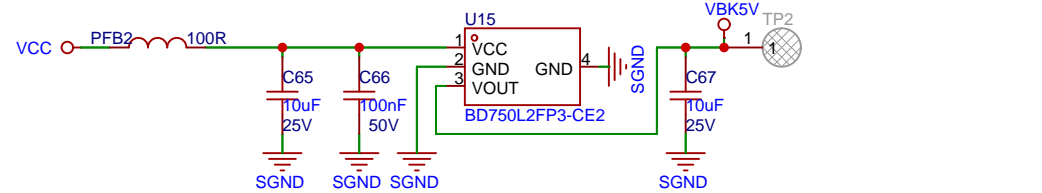
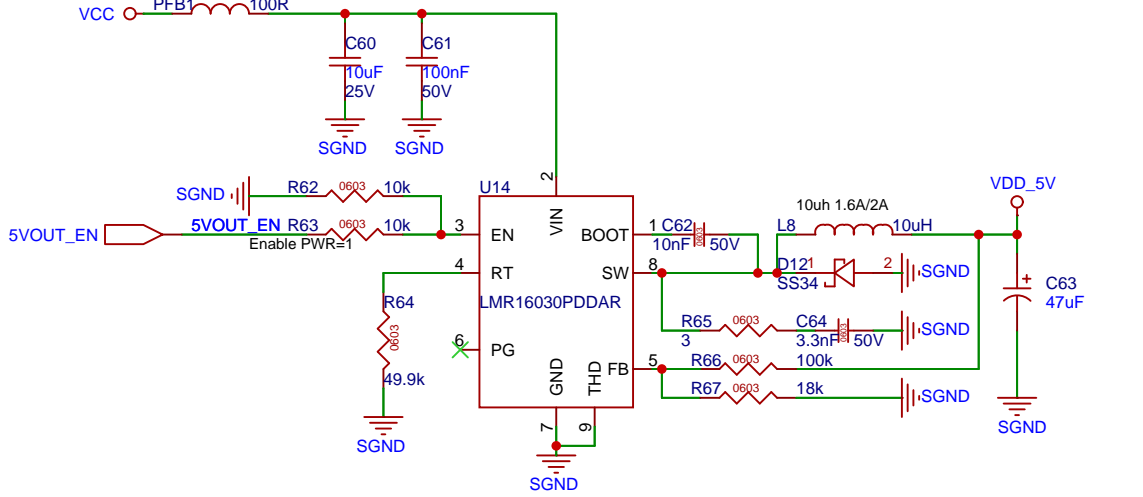
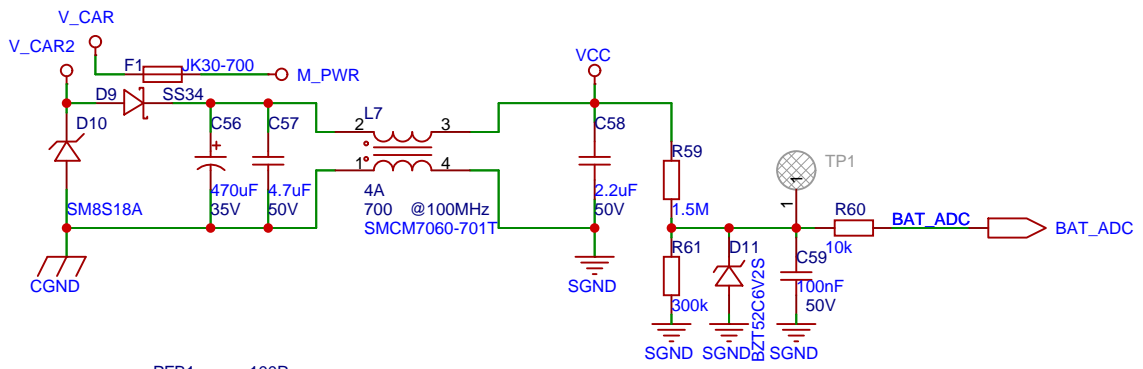
原理图	Sheet1N MPM 25		创建日期	2025-03-01
板子	Sheet1N MPM 25		更新日期	2025-04-13
绘制			图页	output
审阅			mpm 25	
	版本	尺寸	页 2 共 6	
嘉立创EDA		V1.0	A4	嘉立创EDA



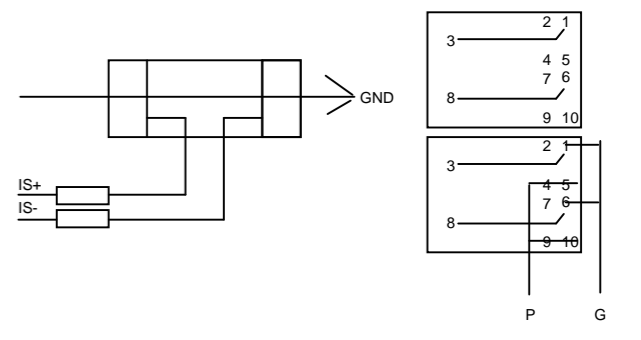
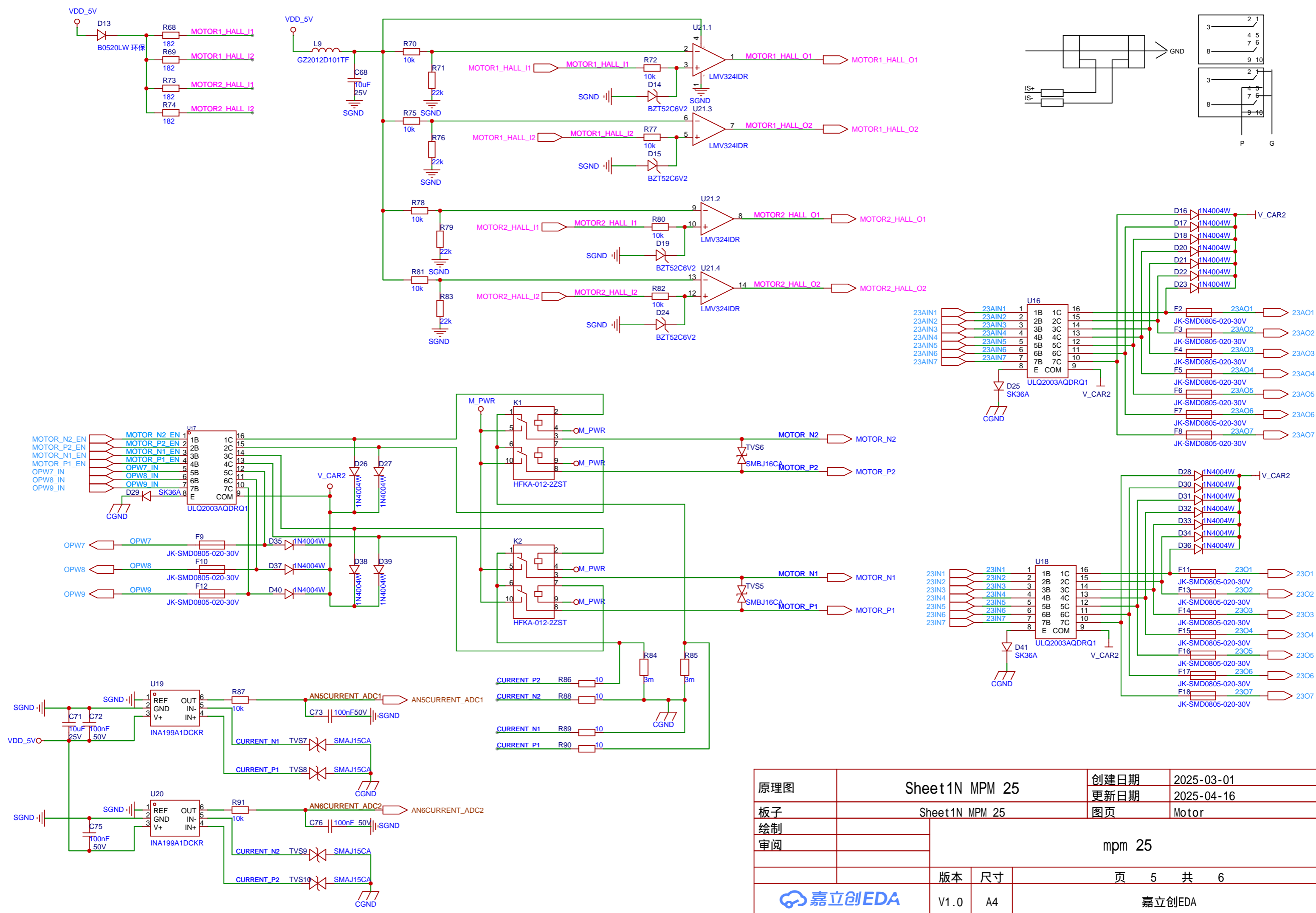
原理图	Sheet1N MPM 25	创建日期	2025-03-01
		更新日期	2025-04-13
板子	Sheet1N MPM 25	图页	can lin SPI TR
绘制	mpm 25		
审阅			
		版本	尺寸
		V1.0	A4
		页 3 共 6	
嘉立创EDA		嘉立创EDA	



u37 图纸是直针插件，实际使用的是弯针的，设计PCB时请按照弯针




原理图	Sheet1N MPM 25		创建日期	2025-03-01
			更新日期	2025-04-12
板子	Sheet1N MPM 25		图页	Power and conneter
绘制	mpm 25			
审阅				
			页 4 共 6	
嘉立创EDA		版本	尺寸	嘉立创EDA
		V1.0	A4	



原理图	Sheet1N MPM 25		创建日期	2025-03-01
板子	Sheet1N MPM 25		更新日期	2025-04-16
绘制			图页	Motor
审阅			mpm 25	
			版本	V1.0
			尺寸	A4
			页	5 共 6
嘉立创EDA			嘉立创EDA	

1, PT0 ~PT3 HELL sensor input, 2&3 are backup
 2 P port for SPI 0~2

原理图	Sheet1N MPM 25		创建日期	2025-03-01
板子	Sheet1N MPM 25		更新日期	2025-03-01
绘制		mpm 25		
审阅				
		版本	尺寸	页 6 共 6
		V1.0	A4	嘉立创EDA